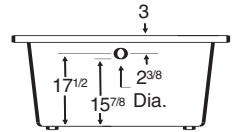
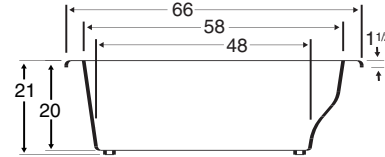
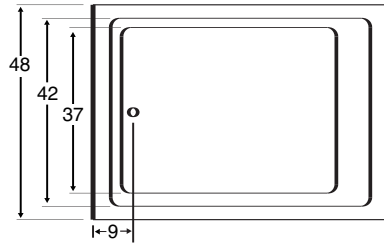


Always check the website for the most updated specifications: www.zumacollection.com



Tub pictured with optional waste and overflow.

All bathtub dimensions are $\pm 1/2"$.

CODES AND COMPLIANCE

Products meet or exceed the following standards:

- Underwriters Laboratories (UL)
- Underwriters Laboratories - Canada (cUL)
- ANSI Z124.1 • ANSI A112-19.7
- ANSI A112.19.8

ELECTRICAL REQUIREMENTS

We recommend one 20 amp ground fault circuit interrupter (GFCI) for each power supply provided with the bathtub.

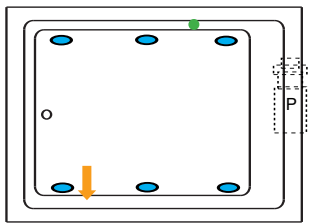
DIMENSIONS

66" x 48" x 21" deep

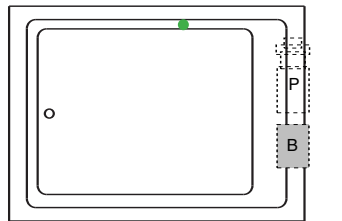
Whirlpool Operating Gallons = 70

Gallons to Overflow = 100

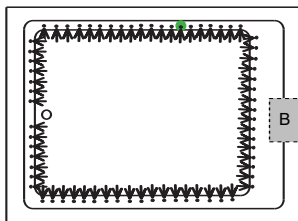
Whirlpool



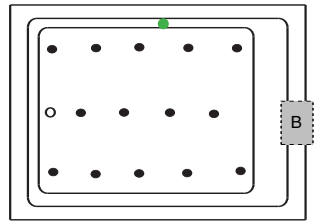
Combination (pump and blower location only)



Airbath System II



Airbath System III



OPTIONAL ACCESSORIES

- Apron
- Chromotherapy Light
- Grab Bars
- Inline Heater
- Pillow
 - Angle
 - Full Back
 - Head & Shoulder Support
 - Head Support
 - Open Back
 - Suction Cup
- Rotary Jets
- Tile Flange Kit
- Waste & Overflow
- Wood Decking
- Wood Shelf

Undermount Yes No

LEGEND: P PUMP B BLOWER JET ON/OFF CONTROL
 DUAL SUCTION ACCESS PANEL (MINIMUM 16" x 20")

INSTALLATION TIPS

- Install product according to our Owners Manual and local codes.
- All units with an Airbath III may be 1 1/2 - 2 1/2" higher than stated.
- All whirlpool or Airbath™ units require an access panel.
- Hot water supply should be 65-75% of tub capacity or greater. Always consult your local plumber for recommendations as installations will vary.
- When ordering for undermount installation, always advise us to assure there are no issues with deck mounted controls.
- Cut-out dimension: 64" x 46"